



**KASPER
MEADOWS**

Luxury in the lap of nature!





KASPER MEADOWS

Set in the tranquil environs of Umeta Village, close to the banks of the River Mahi lies Kasper Meadows. Enveloped by lush green plantation, natural flora & fauna of the site creates a unique eco system that spells serenity.

Being such a unique site, it was essential to look at it from a perspective which would enhance its natural beauty further. At Kasper Meadows just 21 units are set in a circular fashion to create a community of like minded residents. Large plot sizes, planned vegetation, premium lifestyle amenities and a well-thought of holiday villa for each resident helps translate the dream of the developers into reality.

Give your family a gift that they shall cherish for years to come. Gift yourself a life away from the urban chaos!

*Where the only thing
to do is to enjoy,*



*Where the only sound
is bird's chirping,*



*Where the only
dominant colour is green!*








The weekend villa at Kasper Meadows is apt for a family or extended family. With a 2-BHK planning, a private splash pool, a spacious front garden & a terrace, you have multiple vistas to enjoy life.

The layout of the campus is set uniquely wherein all the units face the common central landscaped garden. Thus the private gardens of the 21 units add up with the common plot to create a huge open common space for each villa.

With such an inviting feel, who knows you might be lured to think of making this your primary home!



Where life slows down, 
 Where you experience
a blissful lifestyle,
Where you **find peace!** 





Go Green

- Common Lighting & Street Lights through Solar Panel
- 1 KVA Solar Panel for each Home to ensure continued outdoor lighting & sprinklers in each plot (as part of construction of villa)
- Landscaping & plantation all around the campus
- Plantation to be done outside each unit



Where every family member
finds joyful leisure vistas,



Where everyday is a
celebration of life!

LAYOUT PLAN

- TYPE A - 2 BHK
- TYPE B - 2 BHK
- TYPE C - 2 BHK



Area Table (Sq.Ft.)

Plot No.	Area	Plot No.	Area
01	5473	12	4245
02	7161	13	8505
03	6262	14	7565
04	6262	15	6594
05	6262	16	4989
06	6262	17	4525
07	6262	18	4959
08	7914	19	6547
09	7304	20	5917
10	6238	21	4829
11	7419		

Common Facilities include:

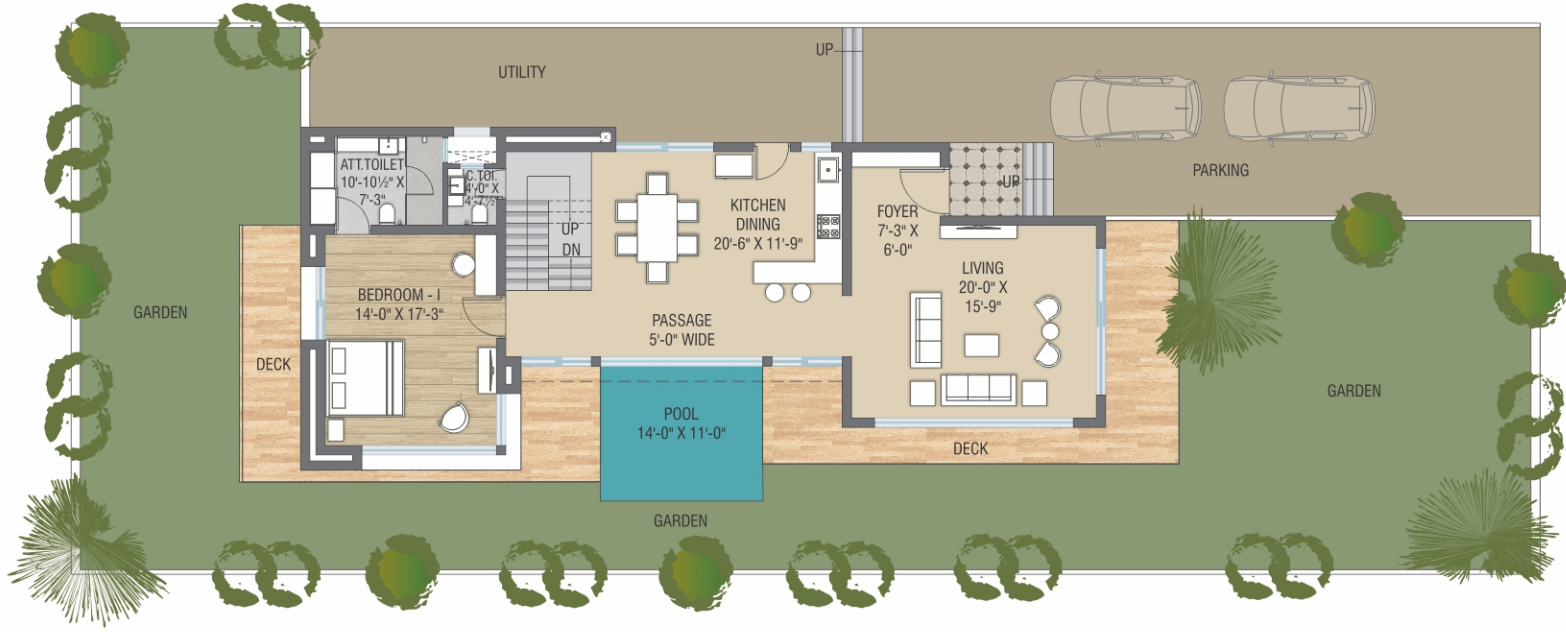
- Designer Entrance Gate
- 24 Hours Security
- Underground Cabling
- Demarcation wall for each plot
- Tree Plantation all around the campus

Individual Leisure Home includes:

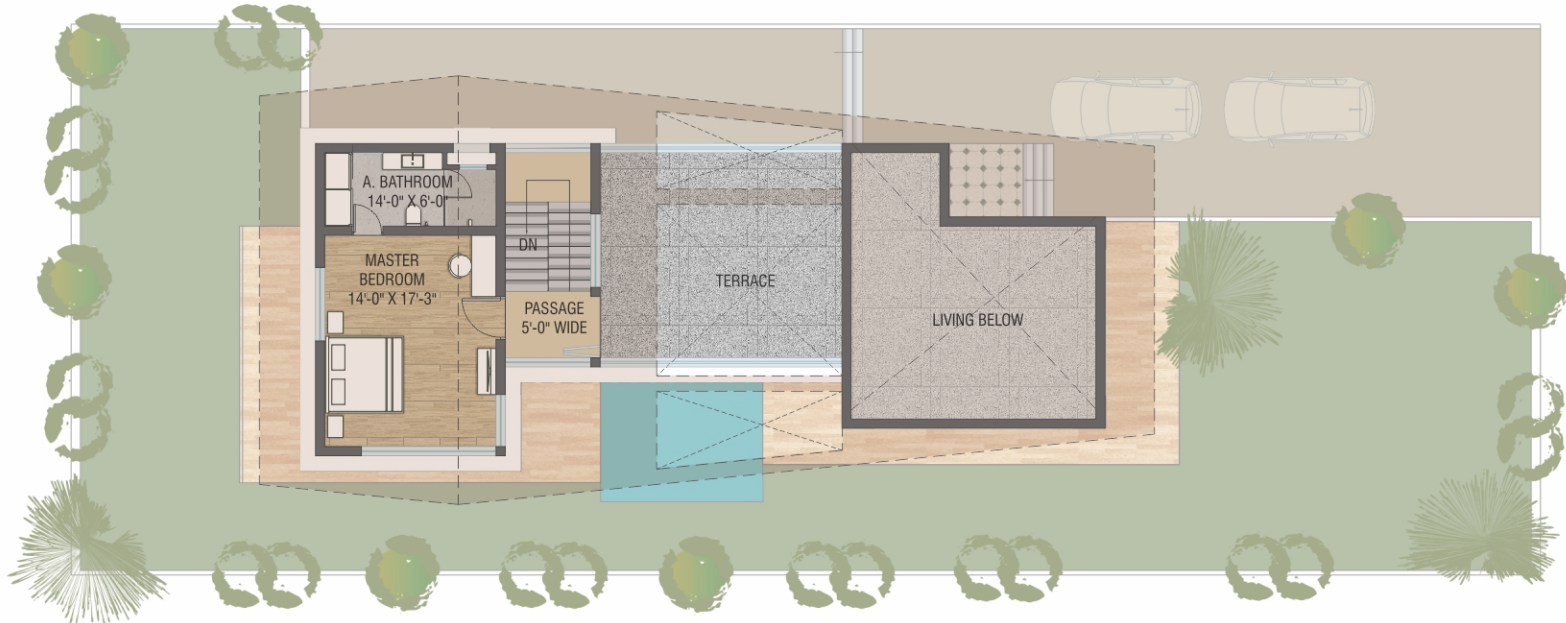
- RCC & Brick Masonry
- Inside texture finish surface and out side stone cladding
- Vitrified rustic finish tile and kota stone flooring
- Decorative main door and paneled internal doors
- Aluminium Section windows
- Granite platform with SS sink and glazed tiles in Kitchen
- Designer Bathroom with premium fittings & vessels, glazed tiles dado up to lintel level.
- Modular switches with concealed copper wiring of approved quality.
- Splash Pool / Water Body with ceramic tiles & filtration unit
- Boring for water supply & Septic Tank for each unit
- Fully Furnished Home options available

TYPE - A 2-BHK

Ground floor



First floor



TYPE - C 2-BHK

Ground floor



First floor



Life @ Kasper Meadows

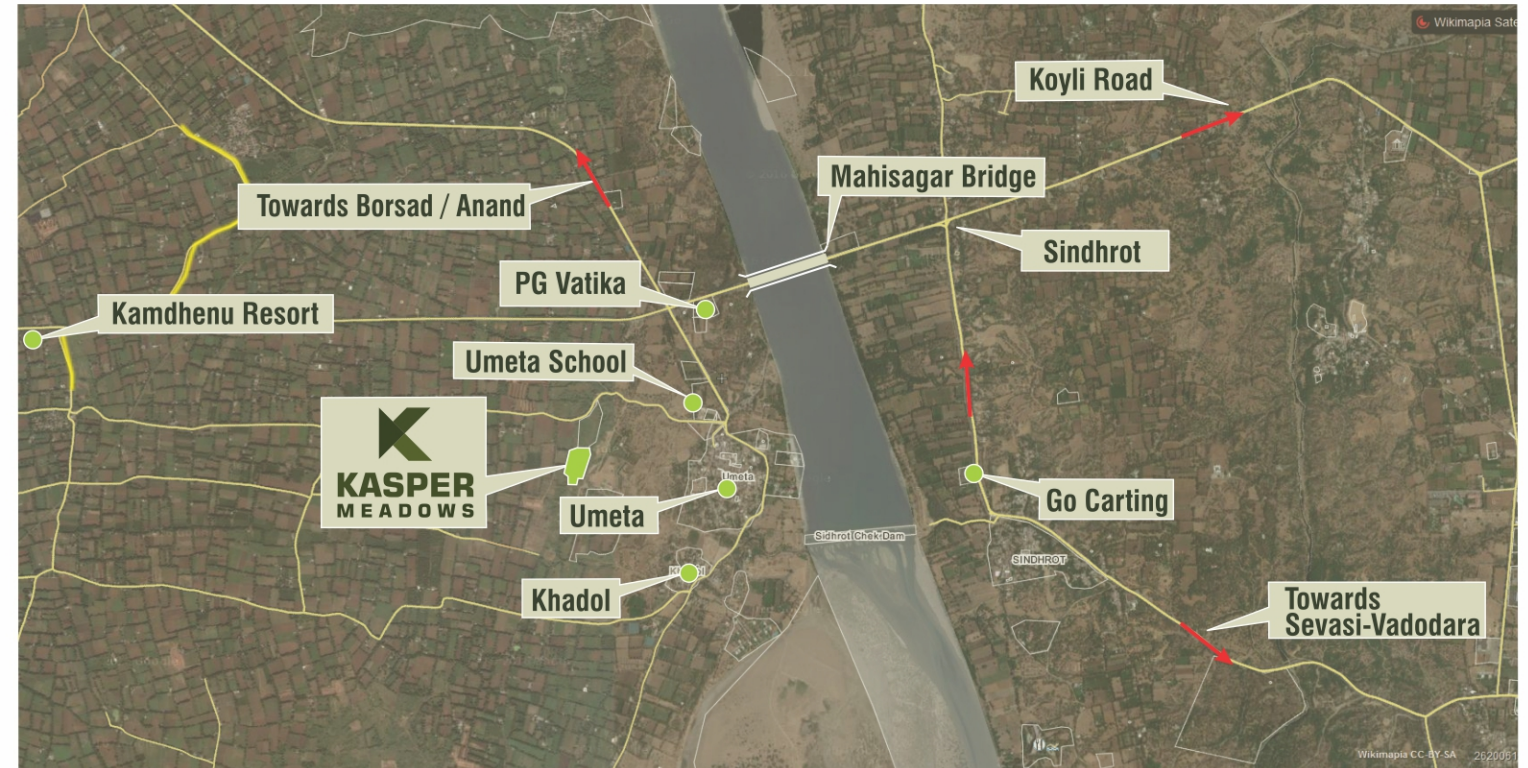


Recreational Facilities Include:

- Banquet Hall / AV Room / Discotheque
- Billiards Room
- Table Tennis & Carom
- Multi-purpose Court
- Children's Play Area
- Jogging Track
- Swimming Pool with Kid's pool



Key Plan



Site: KASPER MEADOWS, Umeta- Fatehpura Road, (400 mts from Umeta School), At Umeta, Taluka Anklav, Dist. Anand - 388510.

We Request • External Elevation changes shall not be permitted. • Acceptance of payment towards booking of unit is subject to the rules and regulations of the developers. • No unit will be considered allotted, without payment of the entire amount. • The entire payment, including all additional amount, is to be made before possession, or within one year from the date of booking which ever is earlier. • Documentation charges, Stamp duty, Service Tax, Development Charges, Maintenance Deposit, Registration charges etc. will be borne by unit holder. • Continuous default in payment will lead to cancellation. • Developers shall have full rights to change or alter the plan / specifications. • In the case of booking cancellation 20% of the booking amount plus extra expenditure will be deducted from booking amount. The amount will be refunded after the new booking of same unit. • This brochure does not form a part of agreement or any legal documents, it is for easy display of the project. • Plot area mentioned here are indicative, actual plot area may vary on site. • The facilities and amenities mentioned here will be completed only after the entire project is constructed. • Some photographs shown are for easy understanding, actual room size, amenities shown in picture will vary. • Subject to Vadodara jurisdiction.

A Project By: **KASPER GROUP**

Developers: **Vamm Associates**

Ph.: +91 98251 95160, 99982 16039, 99250 27935

Email: vamm.associates16@gmail.com

Architect:

Urvi Shah  **Associates**
architecture • interiors

Ph.: +91 265 2323830

Structural Consultant: Vyom Consultants

design: stroke&arrow@98240 92010

